

HURRICANE MELISSA

SITUATION REPORT No. 17

AS OF 5:00PM AST on DECEMBER 2nd, 2025

CDEMA CARICOM OPERATIONAL SUPPORT TEAM (COST) AND WORLD FOOD PROGRAMME (WFP) REPRESENTATIVES DELIVERING CDEMA LOGISTICS SYSTEM (CLS) TRAINING IN JAMAICA

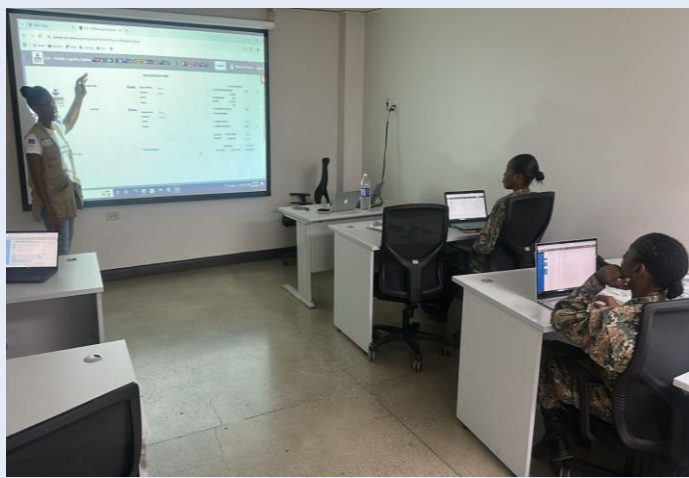


Figure 1: Ramona Pierre of the CDEMA COST delivering training in the CDEMA Logistics System to logistics operations teams in Jamaica.



Figure 2: Jeanpaul Laveau of WFP delivering training in the CDEMA Logistics System to logistics operations teams in Jamaica.

Strengthening On-the-Ground Capacity Through the CDEMA Regional Response Mechanism

The Caribbean Disaster Emergency Management Agency (CDEMA) and the World Food Programme (WFP) delivered training on the CDEMA Logistics System (CLS) to members of the Jamaica Defence Force (JDF) on November 28th-29th. Instructors from CDEMA and the WFP jointly delivered the training to a cohort of twenty-one (21) JDF logistics operations personnel.

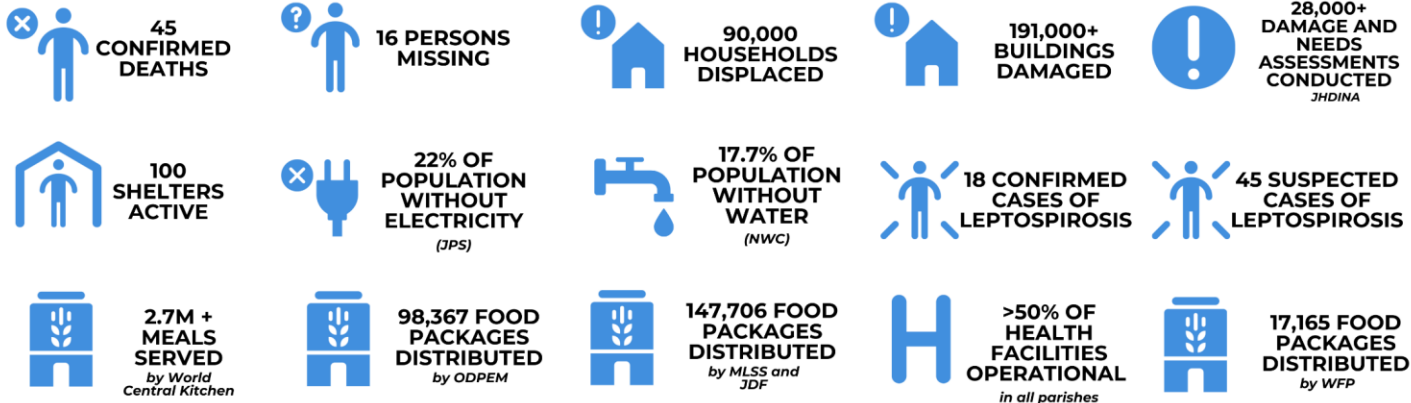
The CLS is a cloud-based application for tracking relief consignments across emergency supply chains, which enhances post-disaster accountability and visibility of emergency relief. The platform will be integrated into logistics operations at the national warehouses and Logistics Support Areas (LSAs). The CLS will also be integrated into the Humanitarian Support Areas (HSAs) to strengthen the humanitarian response to Hurricane Melissa

Updates from Impacted Participating States



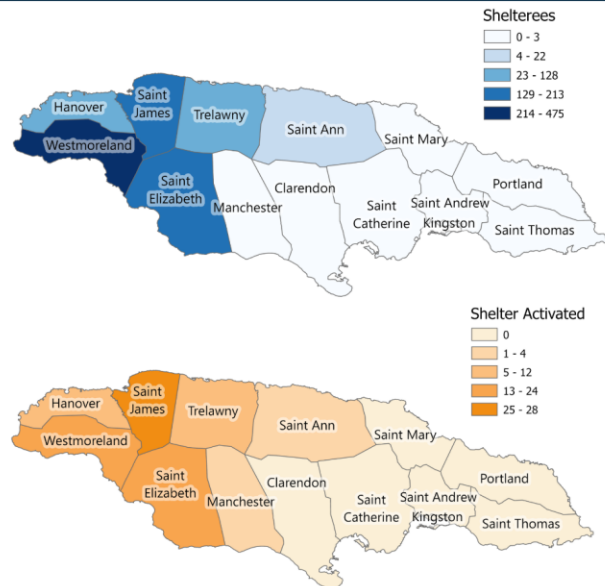
JAMAICA

KEY UPDATES | SOURCE: ODPEM SITUATION REPORT #34 - LAST UPDATED BY 30/11/2025 22:00 HRS



SHELTER INFORMATION | SOURCE: ODPEM SITUATION REPORT #34 - LAST UPDATED BY 30/11/2025 22:00 HRS

Parish	Shelters Occupied	Shelterees	Parish	Shelters Occupied	Shelterees
KSA	Not Activated	Not Activated	Westmoreland	22	475
St. Thomas	Not Activated	Not Activated	Portland	Not Activated	Not Activated
St. Catherine	Not Activated	Not Activated	St. Mary	Not Activated	Not Activated
Portmore	Not Activated	Not Activated	St. Ann	4	22
Clarendon	Not Activated	Not Activated	Trelawny	8	128
Manchester	2	3	St. James	28	163
St. Elizabeth	24	213	Hanover	12	103
			Total	100	1,107



CARIBBEAN SCHOOL OF MEDICAL SCIENCES MISSION | SOURCE: ODPEM SITUATION REPORT #34 - LAST UPDATED BY 30/11/2025 22:00 HRS

 **103 PATIENTS SEEN IN PETERSFIELD**

 **85 PATIENTS AT BURNT SAVANNAH**

 **162 CARE PACKAGES DISTRIBUTED**
at an Early Childhood Clinic.

 **162 CARE PACKAGES DISTRIBUTED**
at an Early Childhood Clinic.

KEY UPDATES

- On November 29, 2025, Mobile Clinics Intervention Group (MCIG) had two successful Clinics in Petersfield and Burnt Savannah, Westmoreland. Patients in Burnt Savannah are located in Grace Primary and Junior High School

Updates from Impacted Participating States



JAMAICA (Continued)

UTILITIES & TELECOMMUNICATIONS | SOURCE: ODPEM SITUATION REPORT #34 - LAST UPDATED BY 30/11/2025 22:00 HRS



78% OF CUSTOMERS POWER RESTORED



APPROX. 535,000 OF APPROX. 687,000 CUSTOMERS RESTORED



97% OF MAJOR HOSPITALS NOW RESTORED



76% OF NWC CRITICAL SITES NOW RESTORED



+300 LINE WORKERS ADDED (844 TOTAL) AIDING RESTORATION



KEY UPDATES

- JPS is also on track to restore at least 75% of customers in St. Ann, Manchester and Clarendon by the second week of December.
- Restoration is now carried out in all 14 parishes.
 - JPS is also on track to restore at least 75% of customers in St. Ann, Manchester and Clarendon by the second week of December.
- Restoration in the last 24hrs:
 - Restoration in Portland is complete, except for inaccessible areas in Birnamwood Buff Bay Valley and the Balcarres Digicel site.
 - The Digicel and Flow sites in Mason River, Clarendon, as well as the Digicel site in Whitehall, Portland, have been restored.
 - The NWC pump in Top Hill, St. Mary; the sewage pump in Camelot, St. Ann, and the Red Hill Primary School in Clarendon were restored.
 - The western 'electrical island' has now been successfully reconnected to the central and eastern sections, creating a unified electrical island that enhances overall grid resilience and stability.
 - The Elegant Corridor, in St. James has been fully restored along with the NWC Pump in Flower Hill.
 - Additionally, sections of the Lucea town centre have been restored.
 - Approximately 67% of the critical sites for the utilities (NWC, Flow, and Digicel) have electricity supply.

FLOW JAMAICA | SOURCE: ODPEM SITUATION REPORT #34 - LAST UPDATED BY 30/11/2025 22:00 HRS

FLOW SITES ONLINE

MOBILE

76%

Supporting approx. 96% of pre-hurricane mobile traffic

DIGICEL | SOURCE: ODPEM SITUATION REPORT #34 - LAST UPDATED BY 30/11/2025 22:00 HRS

DIGICEL SITES ONLINE

MOBILE

80%

FIXED

90%

NWC | SOURCE: ODPEM SITUATION REPORT #34 - LAST UPDATED BY 30/11/2025 22:00 HRS



82.4% RESTORATION
454,000 OF TOTAL 551,800 CUSTOMERS

DIVISION RESTORATION

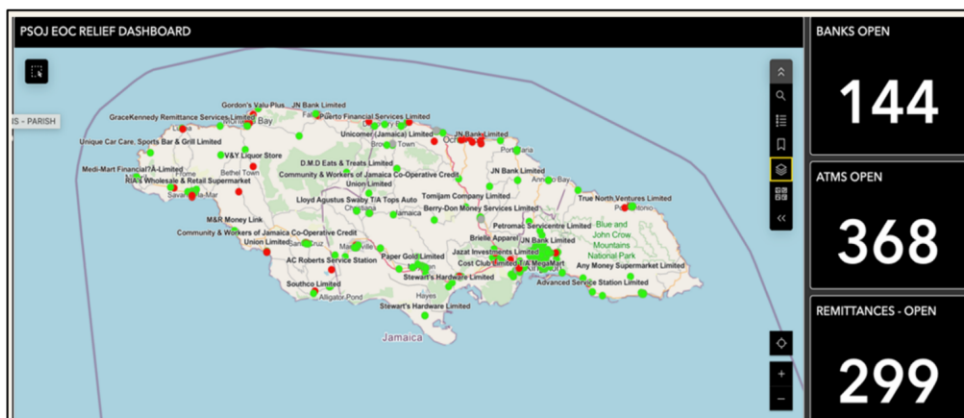
EASTERN

91.4%

WESTERN

61%

PRIVATE SECTOR ORGANISATION OF JAMAICA (PSOJ) | SOURCE: ODPEM SITUATION REPORT #34 - LAST UPDATED BY 30/11/2025 22:00 HRS



Updates from Impacted Participating States



JAMAICA (Continued)

Report from the last Special Government Press Briefing held on Wednesday, November 26th, 2025:

- **Electricity Restoration:** Cabinet has prioritised rapid electricity restoration and approved a new funding mechanism to accelerate Jamaica Public Service (JPS) reconnections before Christmas. A significant increase in the number of households restored is expected over the coming weeks.
- **School Reopening & Repairs:** 845 schools are open, with Region 4 high schools (in the northwestern/western part of Jamaica which includes the parishes St. James, Hanover, and Westmoreland) operating for senior students (Grades 11–13 CSEC/CAPE), and full reopening anticipated within two weeks. Repairs underway at key damaged schools with resilient roofing standards, supported by corporate partners and temporary classrooms provided by UNICEF.
- **United Nations (UN) – Humanitarian Support:** UN approved US\$4M Central Emergency Response Fund (CERF) funding for immediate assistance, supporting shelter, cash transfers, WASH, and health services. Over 145,000 people have already received support, with UN agencies committed to supporting longer-term resilience and recovery.
- **Development Bank of Jamaica (DBJ) – Business Recovery:** DBJ launched a JMD \$10B M5 Business Recovery Programme with immediate, medium-term, and long-term financing windows. Businesses can access JMD \$20–50M through partner financial institutions, with priority support to agriculture, manufacturing, and other sectors to support economic stabilisation and resilience.
- **Shelters & Cleanup:** Active shelters expected to decline sharply in coming weeks; prefabricated buildings will be installed to relocate infirm residents in Trelawny and Westmoreland. National cleanup programme begins next week in Westmoreland, targeting 16 worst-affected constituencies with expanded manpower and equipment.
- **Rapid Housing Deployment under the National Housing Trust (NHT):** NHT is procuring and installing 5,000 semi-permanent Expanded Polystyrene (EPS) housing units, with the first 2,500 prioritised for the most affected parishes. Installations will use NHT-owned and newly acquired lands, with units also distributed through social housing partners.
- **Peril Insurance for Mortgagors:** Approximately 130,000 NHT mortgagors can file disaster-related claims, with a submission deadline of January 15th, 2026. Mobile units are deployed to impacted communities to assist individuals without internet or branch access.
- **Hurricane Relief Loan:** The NHT is offering a JMD \$3.5M loan at 2% interest with a 6-month moratorium, open to both homeowners and immediate family members supporting affected relatives. Funds may be used for repairs and resilience upgrades (e.g., converting timber roofs to slab).
- **Disaster Relief Grant & Mortgage Moratorium:** A JMD \$500,000 grant is available per damaged property, with flexible eligibility including homeowners, pensioners and immediate family members acting on another's behalf. A 6-month mortgage moratorium is automatically applied in the seven worst-affected parishes, with case-based access in other parishes and possible extensions after May 2026.

Updates from the CDPG Thematic Working Groups (TWG) - Actions by the RRM Partners as of 5:00 p.m. on December 2nd, 2025



COORDINATION

- CDEMA's in-country presence comprises three (3) personnel – two (2) CARICOM Emergency Telecommunications Team (CETT) members and one CARICOM Operational Support Team (COST) member; the remainder the COST and CETT personnel have been extracted but support continues remotely. A COST operative will remain in-country for an additional period to support restoration of local parish-level response and recovery governance, which remains a priority.
- The CETT continued support to restore communications across affected parishes.
- CDEMA supported deployment of the Barbados Field Medical Hospital, with 60 responders currently on the ground, including seven (7) from Caribbean Public Health Agency (CARPHA).
- CDEMA is providing ongoing support to the Caribbean Electric Utility Services Corporation (CARILEC) deployment operations which are focused on restoring the electrical grid. Gradual extraction of this team is now underway.
- Operational coordination meetings are now being held twice weekly (Mondays and Thursdays at 6:00 p.m.). The final general coordination meeting in Kingston will take place this evening, December 2nd, at 6:00 p.m. (Pegasus Hotel). A final coordination meeting for western parishes is scheduled in Montego Bay on December 3rd at 6:00 p.m. at a venue that is to be confirmed.
- The United Nations Office for the Coordination of Humanitarian Affairs (UN OCHA) team is transitioning out by end of week; staffing has reduced from 15–20 personnel to three (3), who will remain in Kingston.
- The final UN OCHA Situation Report (#6) will be issued on December 2nd. Future reporting will be led by the Jamaica UN Resident Coordinator's Office.
- UN OCHA is finalising:
 - A financial snapshot of confirmed resources and credit lines for Jamaica's response—including the recently announced JMD \$6 billion relief package via the World Bank.
 - A sectoral results snapshot outlining beneficiaries and key achievements one month after the impact of Hurricane Melissa.
- The Information Management (IM) Working Group continues to engage sector leads and focal points; a handover meeting with ODPEM and partners is planned for Thursday December 4th to ensure continuity of IM services and products.
- A one-pager is being prepared to summarise the activities and expected reach of the US \$4 million Central Emergency Response Fund (CERF) allocation to the Pan-American Health Organisation (PAHO), the United Nations Children's Fund (UNICEF), the International Organisation for Migration (IOM), and the World Food Programme (WFP).



MNCCC

- No updates.

Updates from the CDPG Thematic Working Groups (TWG) - Actions by the RRM Partners as of 5:00 p.m. on December 2nd, 2025



EARLY RECOVERY

- In the Education Sector, UNICEF is providing the following support:
 - 105 tents and tarpaulins to schools in affected parishes, including Trelawny and St. Ann.
 - 320 School-in-a-Box kits currently in transit to Jamaica; 40 kits are already in-country.
 - Mental health and psychosocial support (MHPSS) is being delivered to teachers, children, and early childhood development officers.
 - 15,000 learning kits for Grades 5 and 6 have been printed.
 - An Education in Emergencies course is under development for delivery through the National Technical College of Education.
- According to the Ministry of Education, Skills, Youth and Information (MoESYI):
 - 800 of 1,000 infant and primary schools have reopened, along with 25 high schools.
 - Schools are operating on a shift system.
 - Estimated sector damages: JMD \$20 billion.
 - Nearly 200,000 children experienced interruption to schooling.
- Restoration of electrical power: CARILEC will extend the submission deadline for power sector damage claims to December 27th.



EMERGENCY SHELTER

- A new International Organisation for Migration (IOM) Shelter Coordinator will be deployed to Jamaica for a six-month assignment to support the shelter recovery efforts in coordination with national, regional, and international partners. A new Information Management (IM) Specialist will also be deployed for this period.
- The Jamaica Household Damage Impact and Needs Assessments (JHDINA) are ongoing, lead by the Ministry of Labour and Social Security (MLSS) - 30,000 households have been assessed to date.
- Analysis of satellite imagery continues with parish and community-level damage maps expected this week.
- Partners such as the IOM and the United Nations Development Fund (UNDP) have secured funding to support the Government of Jamaica (GoJ) with debris removal. Other active partners working alongside the GoJ in these efforts include Samaritan's Purse, GER3, CORE, and All Hands and Hearts, .
- A draft Shelter Recovery Strategy is being developed.
- A Housing, Lands and Property (HLP) Advisor will arrive next week to assist with land tenure and informal settlement challenges in shelter recovery planning.
- The Global Shelter Cluster has requested an Environmental Advisor to assist humanitarian agencies in reducing the environmental impacts of their relief and recovery activities.

Updates from the CDPG Thematic Working Groups (TWG) - Actions by the RRM Partners as of 5:00 p.m. on December 2nd, 2025



EMERGENCY SHELTER (*Continued*)

- NFI distributions are being scaled down and targeted to specific needs. Multiple agencies continue technical assistance for roof repairs, including tarp installation teams.
- A [video tutorial](#) in the local vernacular has been produced to guide communities on installing tarpaulin for roof repairs.



EMERGENCY TELECOMS

- Connectivity restored at Granville Health Centre in Montego Bay.
- The Emergency Telecoms Sector (ETS) partners have provided connectivity for 2,539 devices, with 1.8 Terabytes of data used over the last month.
- An After-Action Review is being planned.
- The CARICOM Emergency Telecommunications Team (CETT) remains in-country, supporting ODPEM in restoring the District Emergency Communications (DECOM) system by programming and installing routers, radios, and a satellite "backbone" at the repeater sites which will establish redundancy for the terrestrial networks.
- The CETT also supported the Barbados Defence Force (BDF) in establishing telecommunications for the Barbados Emergency Medical Team (EMT) field medical hospital.



HEALTH

- No new updates have been reported, the previous updates remain valid.



PRIVATE SECTOR

- The private sector is now integrated into the ODPEM sector coordination.
- Engagement underway with agricultural private sector groups:
 - Meetings arranged between Jamaican and Mexican agricultural stakeholders to share lessons learned from the Mexican experience following the impacts of Hurricane Otis
 - The Belize private sector is sending a container of building materials to support agricultural recovery.

Updates from the CDPG Thematic Working Groups (TWG) - Actions by the RRM Partners as of 5:00 p.m. on December 2nd, 2025



PROTECTION

- The Gender Subgroup of the Protection Thematic Working Group convened last Friday, November 28th and today, December 2nd. Today's meeting was jointly held with the United Nations Population Fund (UNFPA), UN Women and IOM, to discuss shelter safeguarding, immediate support, and long-term capacity building.
- The Child Protection Subgroup met today, December 2nd, with involvement from the Child Affairs Policy Division who reported that the child-care facilities in affected parishes were severely damaged and the children in these facilities have been relocated. Estimated damage is USD 2.5M.
- The Women's Centre of Jamaica which provides care and support to adolescent mothers and their children has reported that several of their buildings were severely damaged, and connectivity issues hamper outreach to at-risk girls. Despite this, the Centre continues to provide psychosocial support and distribute care packages.
- UN Women, during their deployment last week, conducted community visits with the Bureau of Gender Affairs and facilitated Prevention of Sexual Exploitation and Abuse (PSEA) sensitisation sessions in collaboration with UNFPA and the United Nations Children's Fund (UNICEF) for the JDF and ODPEM. Discussions with the JDF are ongoing to support sustained training and awareness.
- The Cash Working Group is accelerating its deliberations to enable the provision of cash assistance to families before Christmas.



RELIEF & LOGISTICS

- CDEMA Logistics Systems (CLS) Training and Implementation:
 - 21 JDF personnel have been trained in the use of the CLS platform across multiple Kingston warehouses. Future online training planned for Logistics Support Areas (LSAs).
 - A CLS Implementation Plan has been completed to standardise use across all emergency logistics operations including warehouses, LSAs, and humanitarian staging areas.
- Emergency Supply Chain Improvement Plan:
 - A comprehensive plan has been developed to enhance upstream and downstream logistics, coordination, and supply chain performance. It includes matrices of current versus proposed targets and responsible entities, as well as guidance across all stages of the supply chain.
 - The CDEMA Logistics Specialist will brief national Points of Contact today, December 2nd, on all phases. Transition to national bodies (ODPEM, Ministry of Labour and Social Security) will occur over the short-term (0–3 months), medium-term (3–6 months), and long-term (6+ months).
- Approximately 400 containers of relief items have been tracked since the start of the response.

Updates from the CDPG Thematic Working Groups (TWG) - Actions by the RRM Partners as of 5:00 p.m. on December 2nd, 2025



RELIEF & LOGISTICS (*Continued*)

- Ongoing regional logistics support:
 - Liner service shipments from Barbados to Kingston are being loaded today and tomorrow.
 - The final shipment of 150 metric tonnes of WFP food cargo is being loaded as in-kind food support scales down towards mid-December.
- WFP is supporting multiple partners (Salvation Army, UNICEF, International Federation of Red Cross and Red Crescent Societies, etc.) with 13 active common service requests.
- WFP has increased transport support for ODPEM from Pimento Warehouse and Up Park Camp.
- Eight (8) Emergency Staging Areas (ESAs) remain active; one in Luana has been augmented with additional storage.
- WFP and partners are planning for the 2026 needs and wind-down strategy. A survey will be issued to partners.



WASH

- PAHO, Ministry of Health and Wellness, and CARPHA in collaboration with the WASH Cluster have completed detailed assessments of impacted health facilities. A comprehensive needs list is being finalised.
- WASH assessments for schools will begin soon in partnership with the MoESYI. This assessment will build on existing partner assessments.
- 100 school WASH kits have already been distributed; 300 more to be distributed in coming days via UNICEF and cluster partners.
- Leptospirosis Prevention & Response:
 - Strong consensus on urgent need for coordinated action necessitated the establishment of a joint WASH–Health Technical Working Group which includes the National Solid Waste Management Authority due to waste–vector links.
 - Public communication campaign: WASHCO Jamaica distributing around 10,000 flyers on prevention and safe practices.

Donations and Pledges Made By Countries/Partners - As at 5:00 p.m. November 25th, 2025

Country	Donations and Pledges	Destination
Anguilla	USD \$10,000 financial contribution; 200 lbs of relief supplies (tarpaulins, buckets, shelter kits); Additional Government pledge of XCD \$500,000; Public collection of water and sanitation items ongoing.	Jamaica
Bahamas	The Government of The Bahamas has pledged up to USD \$2,000,000 in combined financial, in-kind, and relief support toward Jamaica's recovery following Hurricane Melissa. The support package includes significant quantities of relief supplies as well as specialized assets such as a disaster container city, a field kitchen, a trailer head, and a crane. Additional capabilities, including potable water and ice production, are also being provided through the Royal Bahamas Defence Force (RBDF) vessel assigned to the mission.	Jamaica
Barbados	Shipment of eight (8) 20-ft containers containing: 1,219 heavy-duty tarpaulins, 1,300 cots, 50 generators, 4 chainsaws, food items, hygiene supplies, toiletries, linens. Six containers already dispatched; two more scheduled for Nov 19. Estimated total value: USD \$535,209.08.	Jamaica
Belize	Financial pledge of US\$200,000 each to the Governments of Jamaica and Cuba to support immediate humanitarian relief following Hurricane Melissa. Additional relief supplies (hygiene items, canned foods, and cash) were dispatched to Belizean students in both countries.	Jamaica, Cuba
Canada	Approx. USD \$7.87M total humanitarian support, including: USD \$3.21M to WFP (food/logistics for Jamaica & Cuba); USD \$1.07M to Canadian Red Cross; USD \$1.07M to CARE Canada; USD \$714k to PAHO (healthcare in Jamaica); USD \$714k in relief items/medical kits via CRC; USD \$500k to MSF; USD \$250k each to Plan Canada & CLWR (Haiti); USD \$93k for deployment of humanitarian experts (CANADEM/CRC).	Jamaica, Cuba, Haiti
Caribbean Development Bank (CDB)	USD \$50,000 provided to support the deployment of emergency response teams under the Regional Response Mechanism (RRM).	CDEMA RRM
Caribbean Development Fund (CDF)	The CDF has contributed USD \$300,000 to facilitate the deployment of emergency response teams under the Regional Response Mechanism (RRM), supporting coordinated regional assistance during Hurricane Melissa. In addition, the Fund has provided a further USD \$500,000 to bolster debris removal operations, helping accelerate national clean-up efforts, restore access routes, and improve conditions for ongoing relief and early recovery activities.	CDEMA RRM
Cayman Islands	USD \$1.2M financial contribution; mattresses, generators, tarps, fuel cans, first aid kits, consumables; USD \$21,025 in medical supplies; USD \$11,000 raised through HSA staff + USD \$10,000 from First Baptist Church; medical supplies from Health City & JDW; MREs; all shipments coordinated through NEOC Human Concerns Cluster with Cayman Airways support.	Jamaica
European Union (EU – ECHO & ERCC)	Over EUR 18M in combined humanitarian and early recovery support. Includes EUR 7.25M via ECHO (Jamaica EUR 2.8M; Cuba EUR 3.45M; Haiti EUR 1M); EU Humanitarian Air Bridge delivering 149 tons of relief items; UCPM assistance from six Member States providing WASH, shelter, PPE, energy items and an EMT Type 2 field hospital; 340 tons of relief goods transported by French & Dutch forces; private-sector aid including 50 tons of airlifted cargo (DHL) and 55 satellite links (HISPASAT).	Haiti, Jamaica, Cuba
Grenada	The Government of Grenada plans on sending 150 double sized mattresses and 10 generators to Jamaica.	Jamaica
Guyana (CDC)	Tarpaulins, chainsaws, and generators supported through private sector contributions (approx. USD \$101,000).	Jamaica
Japan (JICA)	Emergency relief items including tents, sleeping pads, portable jerry cans.	Jamaica
Saint Kitts & Nevis	Saint Kitts and Nevis has pledged a financial contribution US\$100,000 to support the Government and people of Jamaica in their recovery and rebuilding efforts.	Jamaica

Donations and Pledges Made By Countries/Partners - As at 5:00 p.m. November 25th, 2025

Country	Donations and Pledges	Destination
Switzerland (Swiss Agency for Development & Cooperation – SDC)	Approx. USD \$462,000 humanitarian assistance: USD \$280k to IFRC (Cuba/Jamaica); USD \$182k to GiveDirectly for cash assistance in Jamaica; top-up support to water/DRR/cash projects in Haiti; deployment of Swiss Humanitarian Aid experts + 2.5 tons of water-treatment equipment to Cuba.	Jamaica, Haiti, Cuba
Trinidad & Tobago (ODPM)	Four (4) 40-ft containers shipped to Jamaica containing food, hygiene items, PPE, mattresses, tarps, linens, cleaning supplies, galvanized sheeting, generators, and non-perishables. Six (6) 40-ft containers approved for Haiti with food, hygiene, linens, and relief items; additional consignments arriving at port for dispatch.	Jamaica, Haiti
United Arab Emirates (UAE)	USD \$500,000 contribution through CDEMA to support most affected states.	Multi-country (via CDEMA CU)
United Kingdom (FCDO)	USD \$10.6M financial assistance; additional in-kind support such as shelter kits, solar lanterns, and hygiene kits; multiple relief shipments coordinated. Up to £475,000 (≈ USD \$641,250) provided to support CDEMA Emergency Response Teams, enhancing operational readiness and deployments across affected states. Relief support provided by engineers on HMS Trent, UKMED EMT operational in Trelawny parish	Jamaica CDEMA RRM
United States of America (USA)	USD \$37.1M emergency package: Jamaica (USD \$22M), Haiti (USD \$11.6M), The Bahamas (USD \$500k), Cuba (USD \$3M). Covers food, WASH, shelter, emergency response, logistics, and life-saving assistance.	Jamaica, Haiti, Cuba, The Bahamas

WORLD BANK CATASTROPHE BOND TRIGGERED

100% payout of US \$150 million to JAMAICA

Following the devastation caused by Hurricane Melissa

CCRIF TO MAKE RECORD PAYOUT TO JAMAICA

US \$70.8 MILLION (~J \$11.4 BILLION) 31/10/2025

US \$21.1 MILLION (~J \$3.4 BILLION) 06/11/2025

TOTAL PAYOUTS - US \$91.9 MILLION (~J \$14.8 BILLION)

Summary

- Thanks are extended to all RRM partners for their continued support to national and regional preparedness, response, and recovery efforts.
- CDEMA and RRM partners remain actively engaged in supporting the relief and recovery operations in the affected Participating States and will continue to provide updates as the situation evolves.

Links to Situation Reports

[Hurricane Melissa Situation Report #1](#)
[Hurricane Melissa Situation Report #2](#)
[Hurricane Melissa Situation Report #3](#)
[Hurricane Melissa Situation Report #4](#)
[Hurricane Melissa Situation Report #5](#)
[Hurricane Melissa Situation Report #6](#)

[Hurricane Melissa Situation Report #7](#)
[Hurricane Melissa Situation Report #8](#)
[Hurricane Melissa Situation Report #9](#)
[Hurricane Melissa Situation Report #10](#)
[Hurricane Melissa Situation Report #11](#)
[Hurricane Melissa Situation Report #12](#)

[Hurricane Melissa Situation Report #13](#)
[Hurricane Melissa Situation Report #14](#)
[Hurricane Melissa Situation Report #15](#)
[Hurricane Melissa Situation Report #16](#)

Links to Needs Lists and Other Information:

[Hurricane Melissa Documents](#)
[Official Needs Lists – Jamaica](#)
[Relief and Logistics TWG Website](#)

[Customs and Consignee Procedures for Disaster Relief](#)
[Cayman Islands Hurricane Melissa Relief Efforts](#)
[Official Needs List - Haiti](#)